



Tri-County Industries, Inc
 159 TCI Park Drive
 Grove City, PA 16127
 724-748-4705



RECYCLING GUIDELINES

Acceptable Materials:

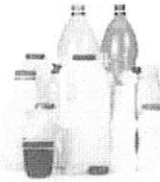


CARDBOARD

Flattened cardboard boxes, dry food boxes non-wax coated paper boxes, egg cartons.

PAPER:

Newspaper, junk mail, office paper, magazines.

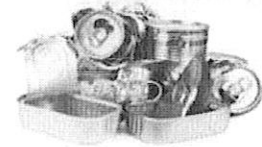


PLASTICS:

Water & soda bottles, milk & water jugs, liquid detergent bottles, plastics labeled #1, #2, or #5.

METAL:

Aluminum cans, steel & bi-metal cans, clean aluminum foil, metal food & beverage containers.



RECYCLING REMINDERS:

- Don't bag your recyclables. Recyclables should be placed loose in your recycling cart.
- Rinse your recyclables. Recyclables should be empty and rinsed clean of any food residue.
- Set out recycling cart the night before your scheduled collection day.
Place within 3-ft of the curb or roadside with the arrows pointed towards the street.
- Wet paper materials will not be collected. Place in the trash the following week.
- Recyclables that are mixed with garbage will not be collected. Place in the trash the following week.
- Unshaded weeks include your recycling collection

2024

January	February	March	April	May	June
S M T W T F S	S M T W T F S	S M T W T F S	S M T W T F S	S M T W T F S	S M T W T F S
1 2 3 4 5 6	1 2 3	1 2	1 2 3 4 5 6	1 2 3 4	1
7 8 9 10 11 12 13	4 5 6 7 8 9 10	3 4 5 6 7 8 9	7 8 9 10 11 12 13	5 6 7 8 9 10 11	2 3 4 5 6 7 8
14 15 16 17 18 19 20	11 12 13 14 15 16 17	10 11 12 13 14 15 16	14 15 16 17 18 19 20	12 13 14 15 16 17 18	9 10 11 12 13 14 15
21 22 23 24 25 26 27	18 19 20 21 22 23 24	17 18 19 20 21 22 23	21 22 23 24 25 26 27	19 20 21 22 23 24 25	16 17 18 19 20 21 22
28 29 30 31	25 26 27 28 29	24 25 26 27 28 29 30	28 29 30	26 27 28 29 30 31	23 24 25 26 27 28 29
		31			30
July	August	September	October	November	December
S M T W T F S	S M T W T F S	S M T W T F S	S M T W T F S	S M T W T F S	S M T W T F S
1 2 3 4 5 6	1 2 3	1 2 3 4 5 6 7	1 2 3 4 5	1 2	1 2 3 4 5 6 7
7 8 9 10 11 12 13	4 5 6 7 8 9 10	8 9 10 11 12 13 14	6 7 8 9 10 11 12	3 4 5 6 7 8 9	8 9 10 11 12 13 14
14 15 16 17 18 19 20	11 12 13 14 15 16 17	15 16 17 18 19 20 21	13 14 15 16 17 18 19	10 11 12 13 14 15 16	15 16 17 18 19 20 21
21 22 23 24 25 26 27	18 19 20 21 22 23 24	22 23 24 25 26 27 28	20 21 22 23 24 25 26	17 18 19 20 21 22 23	22 23 24 25 26 27 28
28 29 30 31	25 26 27 28 29 30 31	29 30	27 28 29 30 31	24 25 26 27 28 29 30	29 30 31